

Century Cabinetry



Quality - Style - Value

Carriage House, Gate House and Euro Series



Front Cover:
Milan Black



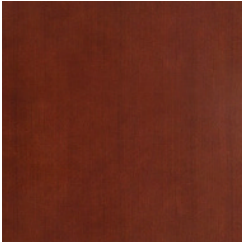
Venice Verde Paint



*Jamestown Walnut Cherry Bases
Jamestown Arctic Paint*



*Jamestown Sand Maple Wall Cabinets
Jamestown White Paint Base Cabinets*



Cherry is an elegant, rich wood and is prized for its beautiful graining. It will darken with age. Pin knots and mineral streaks may be found in this handsome wood.



Maple has a smooth, uniform grain which has helped to make this wood very versatile. This popular wood may also contain mineral streaks and curly graining.

Finishes

Stain

Century utilizes an environmentally friendly premium water-based UV cured finish. It provides a durable, lustrous finish while maintaining an overall consistent stain on the wood.

Paint

A water-based UV cured finish with an opaque color. Paint emphasizes and accentuates the rich detailing on each door which adds an elegant, classic look to the cabinetry.

Impervia Smooth Laminate

Doors are made from Medium Density Fiberboard with white or gray lamination that is bonded to the substrate. These doors are extremely durable and resistant to damage, heat, and humidity. Dirt and fingerprints wipe off easily and quickly. A good choice for those that want a long lasting, worry-free finish.

Distressing

Stained Distressed features: applied distressing techniques like bird pecks and scratches. It is further accentuated by glazing.

Painted Distressing features: sand through technique which exposes the underlying substrate and replicates a time-worn effect.

Carriage House Series

ANNANDALE



Recessed Panel

ARLINGTON



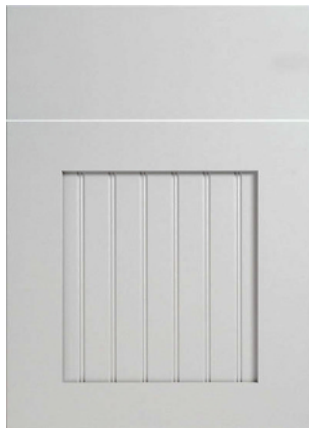
Solid Raised Panel

AVALON



Recessed Panel
Shaker Style

BERMUDA



Wide Frame Beaded Shaker
Paint Only

CHARLESTOWN



Solid Raised Panel

ELITE



Recessed Panel
Paint Only

FOXWOOD



Recessed Panel

HAMPTON



Solid Raised Panel
Paint Only

JAMESTOWN



Recessed Panel

Carriage House Series

LANCASTER



Recessed Panel
Applied Molding

MALIBU



Recessed Panel
Wide Frame Shaker

MILAN



Slab

MONACO



Recessed Panel

RITTENHOUSE



Recessed Panel

VENICE



Recessed Panel
Slim Framed Shaker
Paint Only

WENTWORTH



Solid Raised Panel

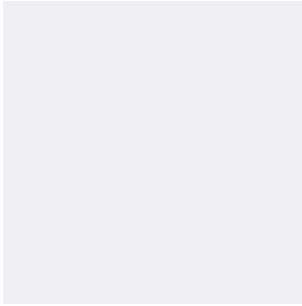
YARDLEY



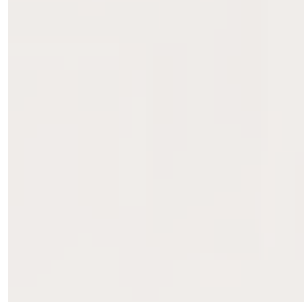
Solid Raised Panel
Applied Molding

Carriage House Series

PAINTED FINISHES



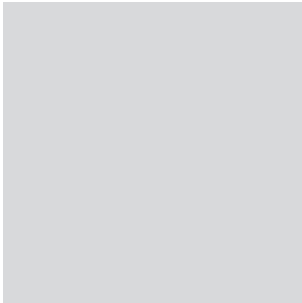
Arctic



White



Willow



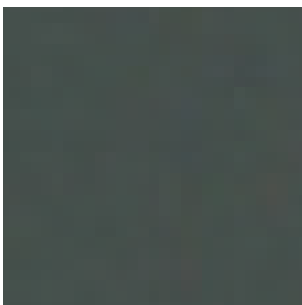
Silver



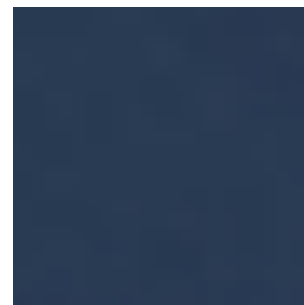
Gray



Stone



Verde



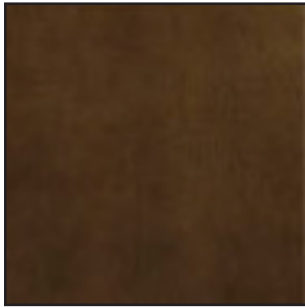
Blue



Black

Carriage House Series

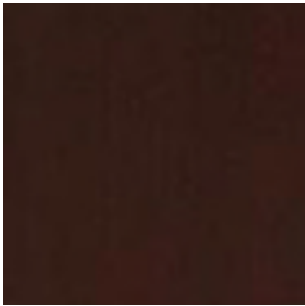
STAIN FINISHES



Walnut Maple



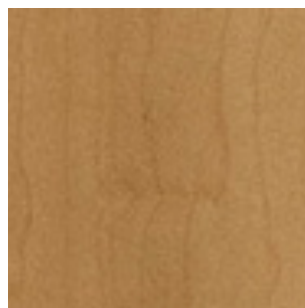
Walnut Cherry



Espresso Maple



Pewter Maple



Sand Maple



Hazlenut Maple

DISTRESSED FINISHES



Walnut Cherry
Black Distressed



Black Distressed

Available in:

- Annandale
- Arlington
- Charlestown
- Jamestown

Carriage House Signature Series

BRADFORD



Veneer
Raised Panel

COVENTRY



Recessed Panel

MANCHESTER



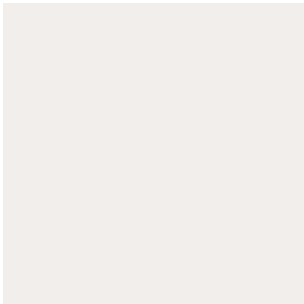
Recessed Panel
Shaker Style

HIGHLAND



Recessed Panel
Shaker Style
Impervia Smooth Laminate
Available in White and Gray

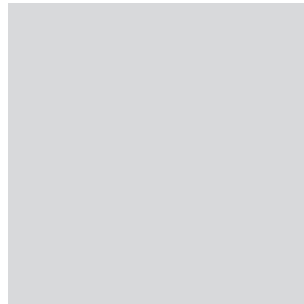
PAINTED FINISHES



White



Willow

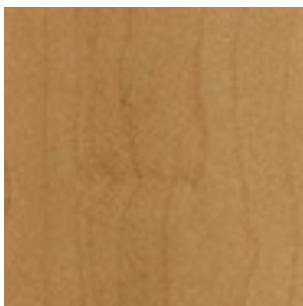


Silver



Gray

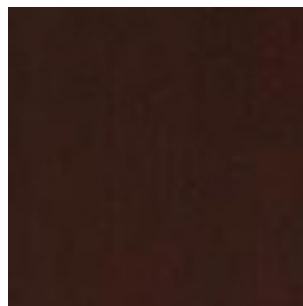
STAIN FINISHES



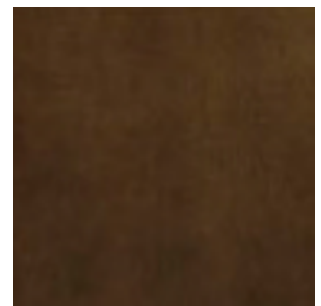
Sand Maple



Hazelnut Maple



Espresso Maple



Walnut Maple



Malibu Stone



*Avalon Arctic Paint
Avalon Gray Paint Island*



Milan Sand Maple

Gate House Series

BROOKFIELD



Veneer MDF
Raised Panel

CLEARBROOK



Recessed Panel

MISSION



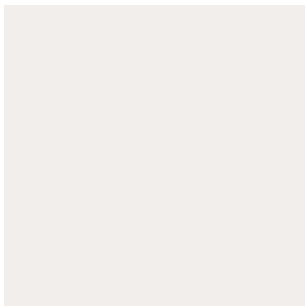
Recessed Panel
Shaker Style

HUDSON



Recessed Panel
Shaker Style
Impervia Smooth Laminate
Available in White and Gray

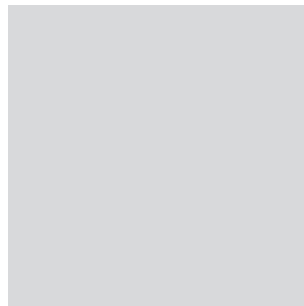
PAINTED FINISHES



White



Willow



Silver



Gray

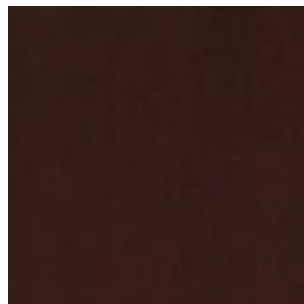
STAIN FINISHES



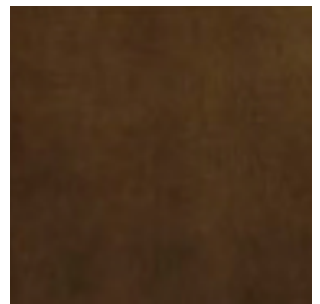
Sand Maple



Hazlenut Maple



Espresso Maple



Walnut Maple



Monaco Arctic Paint

Construction Options

CHS	CHS SIG	GHS	CABINET BOX
✓	✓	✓	3/4" Thick Solid Wood Face Frame with Beaded Front
✓	✓	✓	Face Frame Stiles 1 1/8" Wide; Rails 1 7/8" Wide
✓	✓	✓	Plywood Construction Braces
✓	✓	✓	Unfinished End Panels - 3/8" Thick Furniture Board
✓	✓	✓	Finished End Panels - 5/8" Thick Furniture Board Finished Semi-Flush with Coordinating Laminate Color
✓	✓	✓	3/8" Thick Furniture Board Tops and Bottoms
✓	✓	✓	Interior Finished with Natural Maple Laminate Color
			SHELVES
	✓	✓	3/4" Thick Furniture Board Shelves with PVC Front Edge
✓			3/4" Thick Furniture Board Shelves with Beaded Wood Front Edge
			DRAWERS
		✓	5/8" Thick Pinned Plywood Drawer Three Quarter Extension Side Mount Glides
	✓	●	3/4" Thick Front Dovetail Drawer with Plywood Sides Full Extension Undermount Soft Close Glides
✓			3/4" Thick Dovetail Drawer with Plywood Sides Full Extension Undermount Soft Close Glides
			PULL-OUT TRAYS
		✓	Half Depth Shelf
✓	✓	●	Middle Pull-Out Tray, Pinned Plywood Three Quarter Extension Side Mount Glides
●			Middle Pull-Out Tray, Dovetailed Plywood Sides, Full Extension Undermount Soft Close Glides
●	●	●	Bottom Pull-Out Tray, Pinned Plywood Three Quarter Extension Side Mount Glides
			DOORS/HINGES*
		✓	Full-Overlay Doors with 6-way Adjustable Concealed Hinge
✓	✓	●	Full-Overlay Doors with 6-way Adjustable Concealed Soft Close Hinge
			WARRANTY
✓	✓	✓	10 Year Factory Warranty

● - Optional Upgrade

*The following cabinets do not come with the Soft-Close feature: Base Lazy Susan, Wall Drawer and Wall Pie Cut Cabinet.

Glass Door Options

TRADITIONAL LINE

Mullion Glass



- Clear Glass
- Not Available on Milan, Hudson, Monaco, Venice or Highland
- Cabinet Must be Ordered as WM

Framed Glass



- Clear Glass
- Standard on Milan, Hudson, Monaco, Venice and Highland
- Available Option for All Door Styles
- Cabinet Must be Ordered as WG

Frosted Glass



- Frosted Glass Available As Upgrade for Framed Doors Only

Reeded Glass



- Reeded Glass Available As Upgrade for Framed Doors Only

Crown Moldings and Light Valances



Large Crown
CMT10
10' Lengths



Angled Crown
CMA10
10' Lengths



Coved Crown
CMC10
10' Lengths



Medium Crown
CM8
8' Lengths



Small Crown
CMS8
8' Lengths



Beaded Top/Bottom
BTBM8
8' Lengths



Light Valance Shaker
LVSH8
8' Lengths



Light Valance
LVM8
8' Lengths

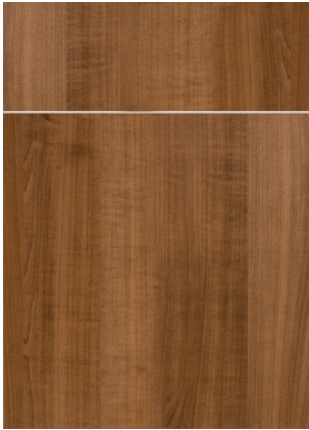


*Vista Driftwood Laminate Walls
Venice Arctic Paint Bases*

EURO SERIES



SIENNA



Slab Door
Sahara Laminate

VISTA



Slim Framed Shaker
Driftwood Laminate

SAN MORENO



Recessed Panel
Shaker Style
Gray Laminate

TEXTURED LAMINATE



Driftwood



North Latitude

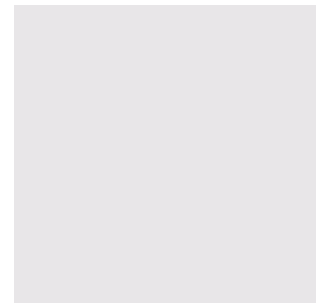


Sahara



West Latitude

IMPERVIA SMOOTH LAMINATE



White



Gray

Construction Options

EURO	CABINET BOX
✓	Horizontal Construction Braces
✓	Unfinished Sides - 5/8" Thick Gray Laminate Furniture Board
✓	Finished Sides - 5/8" Thick Gray Laminate Furniture Board with Matching Laminate Exterior
✓	Gray Laminate Interior
SHELVES	
✓	3/4" Thick Furniture Board Shelves with PVC Edge Banding
DRAWERS AND ROLL-OUT TRAYS	
✓	Half Depth Fixed Base Shelf
✓	5/8" Gray Pinned Furniture Board Drawer Box with Undermount Full Extension Glides, Soft-Close
•	Euro-Tech Drawer with Full Extension Glides, Soft-Close
•	Mid Gray Pinned Pull-Out Tray with Undermount Glides, Soft-Close
•	Bottom Gray Pinned Pull-Out Tray with Undermount Glides, Soft-Close
DOORS/HINGES	
✓	Full Overlay Door with 6-way Adjustable Concealed Hinge
•	Full Overlay Door with 6-way Adjustable Concealed Soft Close Hinge
WARRANTY	
✓	10 Year Factory Warranty

- - Optional Upgrade

The following cabinets do not come with the Soft-Close feature: Base Lazy Susan, Wall Pie Cut Cabinet.

Glass and Moldings

Framed Glass



- Frosted Glass
- Framed Glass Standard on all Door Styles
- Interior of Cabinet Remains Gray



Top Molding
8' Lengths
F3/96



Light Valance Molding
8' Lengths
F3/96



*Vista Driftwood laminate
Milan Black Paint Island*

Storage and Convenience



Base Lazy Susan



Base Pull Out



Double Trash Can



Trash Can



Pull Out Trays



Mixer Cabinet



Base Pullout
With Cannisters



Floating Shelves



Base Blind Corner Swing Out



Peg Board Drawer Insert



Knife, Spice Tray, and Cutlery



Tilt Out Tray



449-PC



3910-DBAC



993-SN



449-96PC



993-96SN



575-96DBAC



Q4-96SN



641-96DBAC



635-96SN



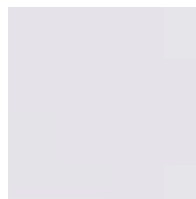
177-96BNBDL



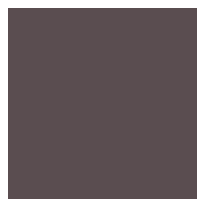
F07#5-SN
(Available only in
SN, BLK)



Satin Nickel
(SN)



Polished
Chrome
(PC)



Oil Rubbed
Bronze
(DBAC)



Brushed
Pewter
(BNBDL)



TK851BSN



TK910AG



TK901BLK



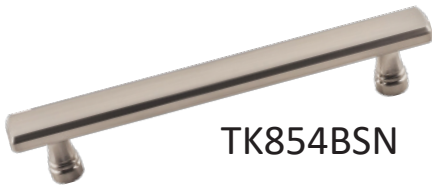
TK880HB



TK701BSN



TK1010BSN



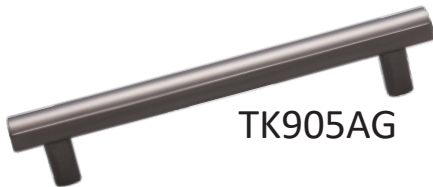
TK854BSN



TK942BLK



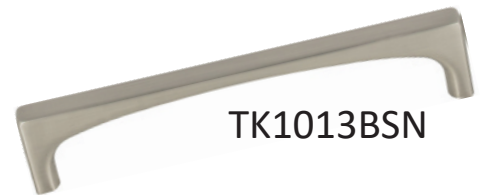
TK704BSN



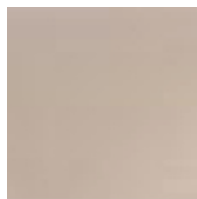
TK905AG



TK884HB



TK1013BSN



Brushed Satin
Nickel
(BSN)



Flat Black
(BLK)



Honey Bronze
(HB)



Ash Gray
(AG)

NOTE: 12" LONG

**Recommended for 30, 33 and 36" wide drawers*



Vista Driftwood Laminate



Lancaster Black Paint



Jamestown Willow Paint



Venice White Paint

Care and Warranty

Care & Cleaning Guidelines

The solid wood and wood veneer components used in the manufacturing of your cabinets are finished with Water-Based UV process, that will hold up to continuous use for many years. The materials used in the finishing process are specially designed to meet the most stringent industry performance standards for resistance to moisture, grease, soap, detergents, and food stains. The following guidelines and suggestions should help keep your cabinetry looking beautiful for many years.

Care & Cleaning Guidelines

Remove any oil, grease, or soil, using a clean damp cloth of mild soap and water. Rinse with clean damp cloth. Dry thoroughly with a soft lint-free cloth. DO NOT use steel wool, soap pads, polishing wax or cleaners containing bleach, ammonia, harsh detergents, and abrasives. All of these can remove the factory-applied finish and thus void the warranty. Routine cleaning can help prevent permanent damage from build up of grease and smoke. Excessive moisture can also damage cabinets. The most common areas for moisture build up are around the sink, range, dishwasher, oven and baseboard. Immediately dry surfaces with a clean cloth. Over time cabinet finishes may darken depending upon lighting and should be considered normal.

To Repair Nicks and Scratches

A touch up stick should have been included with your cabinets, if you don't have one, please contact your Century Cabinetry dealer. Rub the soft fill stick over the scratched area and wipe away the excess with a clean, soft cloth. Never use the sand paper or any other material to even out a scratch, as it will damage the finish, if scratches or nicks are still visible after using the touch up stick, a touch up marker can be supplied.

Care of Cabinet Interiors

Century Cabinetry's shelves are made of melamine laminate which is material resistant to scratches, stains, and water penetration. To remove food residue or grease, use any common dishwashing liquid (not detergent) or a solution of mild soap and water. Wipe clean with a clean soft damp cloth and dry thoroughly. Wipe up spills and dry immediately.

10 Year Warranty

Century Cabinetry, Inc. (Century) warrants its products to be free from defects in material or workmanship under normal use for a period of 10 years from date of purchase by the original consumer purchaser and is not transferable to subsequent homeowners. Should defects in material or workmanship arise during this warranty period, Century will replace or repair, at its discretion, the defective cabinet, material or component. This warranty is expressly limited to repair or replacement of the defective part at the discretion of Century, and does not include labor for removal or replacement unless Century installed the product in which case a labor warranty is provided, at Century's discretion, for 1 year from installation.

This warranty does not cover products that are improperly handled, misused, abused, neglected, modified, improperly stored, incorrectly installed or assembled, or subjected to extremes in moisture or temperature.

The warranty covers only accounts in good standing for parts and materials of the products manufactured by Century. Not covered under this warranty are floor samples, granite, countertops, appliances, plumbing fixtures, etc. or labor costs to remove or reinstall materials or related items such as plumbing fixtures, countertops and appliances.

Wood Disclaimer

Variations in color and grain are a natural characteristic of wood. Changes in color to finished wood and painted products can occur due to exposure to household cleaners or chemicals, and light and other environmental factors. These variations and color changes are not deemed defective and, therefore, are not covered under this warranty.

Finishes/Glazes/Distressing

Variations in Century hand applied finishes and glazes is what gives each piece its distinctive look, and these variations are not considered to be defects in material or workmanship.

Changes to Finishes or Product Design

Century may modify products due to supplier availability and as changes or improvements are implemented, but is under no obligation to make these changes to previously manufactured products. If a warranty claim is filed after a product or finish becomes obsolete; Century reserves the right to honor the warranty in the following ways:

- a. To replace the affected component with a new component of the same style.
- b. To replace the affected component with any other component(s) to achieve a similar appearance with a style that is comparable in appearance with a style that is comparable in appearance, color, design, and construction based upon current product offerings.

If components are replaced, Century cannot guarantee that the finish of these items will match the finish and appearance of the original purchased components.

Implied Warranties

This warranty is only valid in the United States of America. To the extent permitted by law, any implied warranties, including the implied warranties of merchantability and fitness for a particular purpose, are limited to the duration of this expressed warranty. This warranty excludes any incidental or consequential damages. Some states do not allow limitations on how long an implied warranty lasts, so the above limitations may not apply to you.

Making a Claim

To make a claim under this warranty, the purchaser must contact Century and report said defects. If you have difficulty obtaining assistance, write to Century Inc. 220 Philips Road, Exton, PA 19341. Attn: Customer Warranty/Service department.

Warranty Effective Date

This warranty is effective 6/19/2025, is subject to change, supercedes all prior versions of warranties offered, and does not extend the warranty period on any prior sales.

THIS WARRANTY IS THE EXCLUSIVE WARRANTY OF CENTURY CABINETRY, INC. AND IS IN LIEU OF ALL WARRANTIES, EITHER EXPRESSED OR IMPLIED. IN NO EVENT SHALL CENTURY BE LIABLE FOR CONSEQUENTIAL, INDIRECT OR INCIDENTAL DAMAGES RESULTING FROM THE INSTALLATION, USE OR FAILURE OF ITS PRODUCT.

